

## **MARK SCHEME for the October/November 2014 series**

# **0417 INFORMATION AND COMMUNICATION TECHNOLOGY**

**0417/03**

Paper 3 (Practical Test B), maximum raw mark 80

This mark scheme is published as an aid to teachers and candidates, to indicate the requirements of the examination. It shows the basis on which Examiners were instructed to award marks. It does not indicate the details of the discussions that took place at an Examiners' meeting before marking began, which would have considered the acceptability of alternative answers.

Mark schemes should be read in conjunction with the question paper and the Principal Examiner Report for Teachers.

Cambridge will not enter into discussions about these mark schemes.

Cambridge is publishing the mark schemes for the October/November 2014 series for most Cambridge IGCSE<sup>®</sup>, Cambridge International A and AS Level components and some Cambridge O Level components.

Invoice date: &[Date]

Invoice time: &[Time]

	A	B	C
1			
2	From:		
3	Tawara Cycles		
4	1643 Briskway Avenue		
5	Tawara		
6	8765-120		
7			
8	Invoice created by:		
9	A Candidate, XX999, 9999		
10			
11	Number of items	=COUNTA(B20:B24)	
12	Number of units	=SUM(E20:E24)	
13			
14	Discount percentage rates		
15	Discount A	0.05	
16	Discount B	0.1	
17	Discount C	0.15	
18			
19	Item	Item Code	Type
20	Trail Special	M0027	=VLOOKUP(LEFT(B20,1),Type,2,FALSE)
21	Roadster 3	R0021	=VLOOKUP(LEFT(B21,1),Type,2,FALSE)
22	Diamond Mountain	M0018	=VLOOKUP(LEFT(B22,1),Type,2,FALSE)
23	Trekkerz	H0044	=VLOOKUP(LEFT(B23,1),Type,2,FALSE)
24	Trekkerz Topper	H0046	=VLOOKUP(LEFT(B24,1),Type,2,FALSE)
25			
26	Sub total		
27	Discount amount		
28	Invoice total		

Header Invoice date: space & auto date left 1 mark  
 Invoice time: space & auto time right 1 mark  
 Row & Column headings visible 1 mark

A9 Candidate details have replaced text 1 mark

B11 COUNTA (B20:B24) 1 mark  
 1 mark

B12 =SUM(E20:E24) 1 mark

Type Lookup used 1 mark  
 LEFT function 1 mark  
 ...(B20,1) 1 mark  
 B20 as relative lookup reference 1 mark  
 Correct named range 1 mark  
 Correct return column 1 mark

Invoice date: &[Date]

Invoice time: &[Time]

	D	E	F
1	<b>Invoice</b>		
2			To:
3	Unit Cost	Lookup used	The Progressive School
4		Correct relative lookup reference	637 Main Highway
5		Correct absolute range	Tawara
6		...from external N14cost.csv	8765-420
7		Correct return column	
8		F20 Unit Cost × Units	1 mark
9			
10			F26 =SUM(F20:F24) 1 mark
11			
12			
13			
14			
15			
16			
17			
18			
19	Unit Cost	Units	Item Total
20	=VLOOKUP(B20,N14cost.csv!\$A\$2:\$B\$117,2,FALSE)	5	=D20*E20
21	=VLOOKUP(B21,N14cost.csv!\$A\$2:\$B\$117,2,FALSE)	5	=D21*E21
22	=VLOOKUP(B22,N14cost.csv!\$A\$2:\$B\$117,2,FALSE)	10	=D22*E22
23	=VLOOKUP(B23,N14cost.csv!\$A\$2:\$B\$117,2,FALSE)	10	=D23*E23
24	=VLOOKUP(B24,N14cost.csv!\$A\$2:\$B\$117,2,FALSE)	1	=D24*E24
25			
26			=SUM(F20:F24)
27			=F26*IF(B12<5,B15,IF(B12<20,B16,B17))
28			=F26-F27
		F28	Sub total – Discount amount 1 mark

Replication 3 formulae rows 20–24 1 mark  
 Orientation Landscape 1 mark  
 2 pages wide & fully visible 1 mark

Discount amount  
 F26\* 1 mark  
 Nested IF (2 or 3 tiers) 1 mark  
 IF B12<5 1 mark  
 IF B12 >=5 AND <20 1 mark  
 IF B12 >=20 1 mark  
 References to B15, B16, B17 1 mark







<b>Page 7</b>	<b>Mark Scheme</b>	<b>Syllabus</b>	<b>Paper</b>
	<b>Cambridge IGCSE – October/November 2014</b>	<b>0417</b>	<b>03</b>

```

<html>
  <head>
    <title>Tawara Cycles</title>
    <link rel="stylesheet" type="text/css" href="N14table.css">
  </head>
  <body>
    <p>A Candidate, XX999, 9999</p>
    <table align="center">
      <tr>
        <td colspan = "3">
          
          <h1>Tawara Cycles</h1>
          <h1>Great deals on bikes</h1>
        </td>
      </tr>
      <tr>
        <td colspan="3"><h2>This week only!<br>We have special offers on
a range of bikes to suit every need...</h2></td>
      </tr>
      <tr>
        <td><h3>Road bike</h3>
          <h3>Offer price $799</h3>
        </td>
        <td><h3>Hybrid</h3>
          <h3>Offer price $899</h3>
        </td>
        <td><h3>Mountain bike</h3>
          <h3>Offer price $959</h3>
        </td>
      </tr>
      <tr>
        <td>
          <a href="roadbike.htm" target="_road">
            
          </a>
        </td>
        <td>
          
        </td>
        <td>
          
        </td>
      </tr>
      <tr>
        <td colspan="4"><p>If these offers do not get you on the road, we
know that we can find the right bike for you.</p>

```

Stylesheet attached 1 mark

Hyperlink 1 mark  
Image N14031.jpg set as link 1 mark  
To open roadbike.htm 1 mark  
In target window \_road 1 mark

<b>Page 8</b>	<b>Mark Scheme</b>	<b>Syllabus</b>	<b>Paper</b>
	<b>Cambridge IGCSE – October/November 2014</b>	<b>0417</b>	<b>03</b>

Hyperlink	From <b>Click here</b>	1 mark
	mailto:	1 mark
	TC@cie.org.uk	1 mark
	?subject=Website Offers	1 mark

<p>To contact us, <a href="mailto:tc@cie.org.uk?subject=Website Offers">Click here</a> to email us, or ring us on 09780 0001001</p><br>

<p>Website design by <a href="http://www.hothouse-design.co.uk" target="\_hothouse">Hothouse Design</a></p>

</tr>

</table>

</body>

</html>

Hyperlink	from Hothouse Design	1 mark
	Correct URL	1 mark
	In target window _hothouse	1 mark



<b>Page 9</b>	<b>Mark Scheme</b>	<b>Syllabus</b>	<b>Paper</b>
	<b>Cambridge IGCSE – October/November 2014</b>	<b>0417</b>	<b>03</b>

```

<html>
  <head>
    <link rel="stylesheet" type="text/css" href="N14table.css">
  </head>
  <body>
    <table align="center">
      <tr>
        <td colspan = "2">
          
          <h1>Deals on wheels...</h1>
          <h1>Road bikes on special offer</h1>
          <p>Last edited by A Candidate, XX999, 9999</p>
        </td>
      </tr>
      <tr>
        <td>
        </td>
        <td>
          <ul>
            <li>Miran Argentia $799</li>
            <li>Miran Argentia A6 $799</li>
            <li>Miran Farifax $500</li>
            <li>Miran Ravenna Ladies $625</li>
            <li>Bienchi Sempre Veloce $320</li>
            <li>Bienchi Sempre Athena $3500</li>
          </ul>
        </td>
      </tr>
      <tr>
        <td colspan="2">
          <p>To buy:</p>
          <ol>
            <li>Click the back button on your browser</li>
            <li>Contact us from the homepage</li>
            <li>We will guarantee a swift response</li>
            <li>Buy and <b>enjoy</b> your new bike</li>
          </ol>
        </td>
      </tr>
    </table>
  </body>
</html>

```

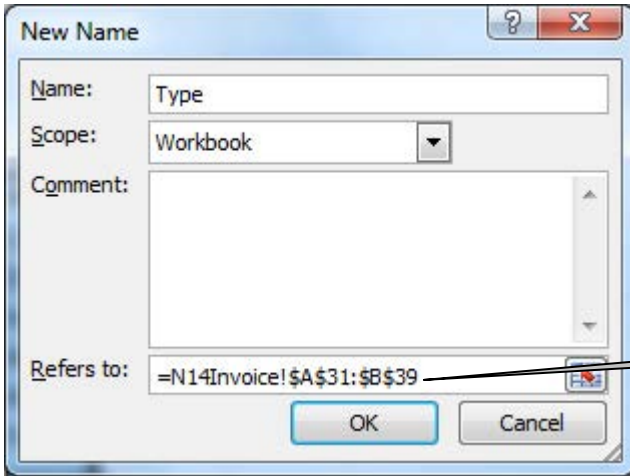
Right cell	Bulleted <ul> Changed to list	1 mark 1 mark
------------	----------------------------------	------------------

Bottom cell	Ordered <ol> (not top line) Changed to list	1 mark 1 mark
-------------	--	------------------

Page 10	Mark Scheme	Syllabus	Paper
	Cambridge IGCSE – October/November 2014	0417	03

Candidate name, Centre number, candidate number

**Evidence Document**



Named range Called Type A31 to B39 1 mark

**Table stylesheet**

/\* A Candidate, XX999, 9999 \*/  
 /\* Stylesheet for table styles \*/

```
table {
  width:80%;
  background-color:#ffff00;
  border-collapse:collapse;
  border:4px solid #000080;
}
```

```
td {
  text-align:center;

  border:2px solid #000080;
  padding:10px 20px;
}
```

Comment Candidate details 1 mark  
 Stylesheet for table styles 1 mark

Table width: 80% 1 mark  
 background-color: #FFFF00 1 mark  
 border-collapse:collapse 1 mark  
 border-width: 4px 1 mark  
 border-style: solid 1 mark  
 border-color: #000080 1 mark  
 text-align:center; 1 mark

table data border-width:2px 1 mark  
 Border-style: solid 1 mark  
 Border-color: #000080 1 mark  
 padding 10px 20px 1 mark  
 Correct { and } and use of ; 1 mark

Candidate name, Centre number, candidate number

A Candidate, XX999, 9999

Text replaced with candidate details

1 mark



# Tawara Cycles

## Tawara Cycles

### Great deals on bikes

**This week only!**  
**We have special offers on a range of bikes to suit every need...**

<p><b>Road bike</b> Offer price \$799</p>	<p><b>Hybrid</b> Offer price \$899</p>	<p><b>Mountain bike</b> Offer price \$959</p>
		

If these offers do not get you on the road, we know that we can find the right bike for you.

To contact us, [Click here](#) to email us, or ring us on 09780 0001001

Website design by [Hothouse Design](#)